

# THERMAL & MECHANICAL SYSTEMS

CATALOG 2026



# EXPERT POWER

## About Company



**Expert Power Building Materials Trading LLC** offers a comprehensive portfolio of Thermal and Mechanical Systems — a curated selection of specialized products engineered for performance, reliability, and efficiency across demanding industrial and commercial applications.

From high-capacity boilers by Ferroli and Hurst to precision chillers, heat exchangers, and energy storage systems, every product in this catalog has been selected from world-class manufacturers. Our lineup also covers expansion joints, duct heaters, humidification and dehumidification systems, fire protection valves, odor control, incinerators, and more — solutions designed to meet the full spectrum of mechanical system requirements.

Backed by our experienced technical team in Dubai, Expert Power UAE is your trusted partner for sourcing, specifying, and supporting these critical systems throughout the UAE.

## BRANDS & MANUFACTURERS



# TABLE OF CONTENT

## HEATING SYSTEMS



**Ferroli** Boilers

05



**Hurst** Boilers

06



**Zenith** Calorifiers

08

## COOLING & THERMAL STORAGE



**HiRef** Chillers

09



**Calmac** IceBank Tanks

10

## FLUID & PIPING SYSTEMS



**Wessels** Tanks

11



**Xylem** Heat Exchangers

12



**Metraflex** Expansion Joints

13



**Albany** Fuel Systems

14



**A&F** Chemical Feed System

15

# TABLE OF CONTENT

## AIR & ENVIRONMENTAL CONTROL

	<b>Price</b> Critical Environments	16
	<b>Price</b> Noise Control Products	18
	<b>Tutco</b> Duct Heaters	19
	<b>Elsteam</b> Humidifiers	20
	<b>Casilica</b> Dehumidifiers	21
	<b>Yake</b> Dehumidifiers	22
	<b>PureAir</b> Odor Control Unit	23
	<b>Filtrotecnica</b> Inertial Filter	24

## SAFETY & WASTE SYSTEMS

	<b>Duyar</b> Fire Protection	25
	<b>Mueller</b> UL/FM Valves	26
	<b>Pennram</b> Incinerator	27



STEAM GENERATOR

## Ferrol delivers precision-engineered boiler solutions built for the full spectrum of commercial and industrial heating demands.

From high-efficiency condensing systems to heavy-duty steam generators, Ferrol's boiler range is designed to perform where it matters most. The OPERA condensing hot water generators set the benchmark with efficiencies up to 109.6% and ultra-low NOx Class 6 emissions, while the PREXTHERM hot water boilers provide reliable outputs ranging from 92 to 1,890 kW — engineered for effortless integration into both new installations and existing infrastructure.

When the application demands more, Ferrol scales with confidence. The PREXTHERM T3G superheated water generators deliver between 6,800 and 15,000 kW for large-scale industrial processes, and the VP 3G F steam boilers produce up to 5,000 kg/h of high-quality saturated steam. Whatever the load, Ferrol has a solution purpose-built to meet it.

## BOILERS & CONDENSORS



CONDENSING BOILER



HOT WATER BOILER



SUPER HEATED WATER BOILER

# BOILERS



## Hurst Boiler & Welding Co. (USA) offers decades of proven engineering behind every steam and hot water system.

Hurst has earned its reputation as a cornerstone of industrial and commercial heating by building systems that simply don't quit. Engineered for maximum uptime and energy efficiency, Hurst's boiler solutions are designed to handle the most demanding thermal loads — from compact, space-saving skid-packaged units to high-capacity water tube configurations that scale with your operation.

The Hurst range spans Scotch Marine boilers, water tube boilers, low NOx models, and complete skid-packaged systems, all supported by a comprehensive suite of auxiliary boiler equipment. Whether the need is reliable steam generation or a complete turnkey thermal solution, Hurst delivers consistent, field-proven performance across every application and industry.

## SCOTCH MARINE BOILER



### SERIES 200 FIRE TUBE BOILER

Hurst Scotch Marine (Fire Tube) Boiler delivers dependable, high-efficiency performance with a minimum 81% efficiency rating. Available in 2-pass, 3-pass, and 4-pass configurations — spanning dryback, wetback, steam, and hot water variants — it is built for demanding and versatile industrial applications.

- Capacity: 15–2,000 HP (502–66,950 MBTU/HR)
- Steam pressure: up to 300 PSI
- Hot water pressure: up to 160 PSI
- Series options: 200, 250, 300, 400, 500, LPE, LPW, LPX, Euro, EGO, and more

# BOILERS



## WATER TUBE BOILER



### SERIES 600 WATERTUBE BOILER

Hurst Series 600-A is Watertube Boiler is a high-pressure industrial workhorse constructed with all-welded membrane panels and a sealed welded furnace for superior structural integrity and combustion efficiency. It accommodates a broad capacity range with full fuel flexibility across gas, oil, or combination-fired configurations.

- Capacity: 6,900–150,000 PPH
- Steam pressure: 250–1,200 PSIG
- Hot water pressure: 30–160 PSIG
- Features: UL listed controls, integrated FireMaster management system

## SKID PACKAGED BOILER



### SERIES 600 WATERTUBE BOILER

Hurst Skid Package Boiler System delivers custom-engineered, factory-assembled steam and hot water solutions mounted on structural steel skids — pre-piped, pre-wired, and ready for single-lift placement.

Every package includes purpose-matched auxiliary equipment such as:

- Feedwater tank and pumps
- Water softener and treatment system
- Boiler blowdown and condensate recovery
- Single-point field connections for fuel, electrical, drain and steam supply



LOW NOX BOILER



BOILER AUXILIARY EQUIPMENT

# CALORIFIERS



Zenith Calorifiers and Water Heaters present an extensive lineup of premium solutions purpose-built to ensure consistent, energy-efficient hot water supply across residential, commercial, and industrial projects.



STAINLESS STEEL CALORIFIER



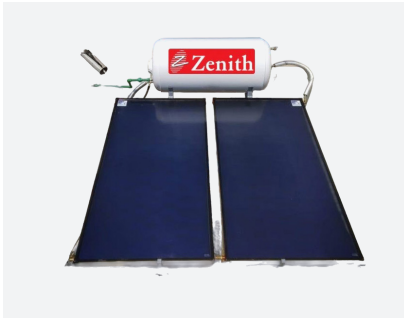
CENTRAL WATER HEATER/  
CALORIFIER



VERTICAL WALL MOUNT  
WATER HEATER



HORIZONTAL/WALL/CEILING  
MOUNT WATER HEATER



THERMOSIPHONIC  
WATER HEATER



STAINLESS STEEL SOLAR  
WATER HEATER



## HiRef TRF CW is a purpose-built chilled water cooling that keeps mission-critical data centers running without compromise.

The TRF CW series brings thermal precision and data center resilience to cooling outputs from 33.4 to 257.1 kW. Upflow, downflow, and displacement airflow options suit any room layout, while speed-modulated EC radial fans hold constant DT conditions and a hydrophilic-coated finned coil extracts peak efficiency from every heat exchange cycle.

Onboard 2-way or 3-way valve control, optional dual hydraulic circuits, integrated humidification, and multi-protocol connectivity make this a cooling unit as intelligent as the infrastructure it protects.

## AIR CONDENSED HEAT PUMP



### HPS SERIES HEAT PUMP

HiRef HPS is a reversible air-to-water multipurpose heat pump engineered for extreme cold-climate operation, delivering hot water up to 65°C even at outdoor ambient temperatures as low as -20°C.

- Capacity: 36-176 kW (cooling & heating)
- Refrigerant: R410A with electronically controlled expansion valve
- Low-noise design with soundproofed compressor compartment and anti-vibration piping

# ENERGY STORAGE TANK



## ICE BANK® ENERGY STORAGE MODEL A TANK

Ice Bank® Energy Storage Model A Tank is CALMAC's founding thermal energy storage solution, field-proven since 1979. Its seamless single-piece construction and welded counter-flow all-polyethylene heat exchanger provide dependable, low-maintenance ice-based cooling with no moving parts.

- **Connection:** Individual tank-to-piping connections via 2" flanges
- **System sizing:** Enables chillers to be 40–50% smaller than conventional HVAC systems
- **Operation:** Charges during off-peak hours; discharges alongside the chiller during peak daytime cooling loads



## ICE BANK® ENERGY STORAGE MODEL C

Ice Bank® Energy Storage Model C Tank is CALMAC's second-generation thermal energy storage solution, offered in multiple sizes with modular internalized headers that enable tanks to connect directly together eliminating 80% of external piping and reducing overall installation footprint by 20%.

- **Connection:** 100% welded polyethylene heat exchanger with no moving parts for virtually maintenance-free operation
- **Pressure rating:** Available up to 125 psi
- **Installation savings:** Modular bolted configuration reduces field piping, connections, insulation, and storage footprint.



# VESSELS & TANKS



Wessels Company (USA) manufactures Pressure Vessels in the USA to ASME standards, encompass expansion tanks, air separators, flash tanks, and thermal storage solutions up to to 10,000 gallons — serving commercial and industrial HVAC, hydronic heating, and fluid management systems.

## EXPANSION & THERMAL TANKS



BLADDER HVAC EXP. TANKS



COMPRESSION EXP. TANKS



THERMAL DIAPHRAGM TANKS

## SURGE, PROTECTION & STORAGE TANKS



SHOCK AND SURGE TANKS



FIRE PROTECTION TANKS



FLASH TANKS

## FILTRATION & FLUID MANAGEMENT



AIR DIRT SEPARATORS



BAG FILTER VESSELS



GLYCOL MAKE-UP PACKAGES

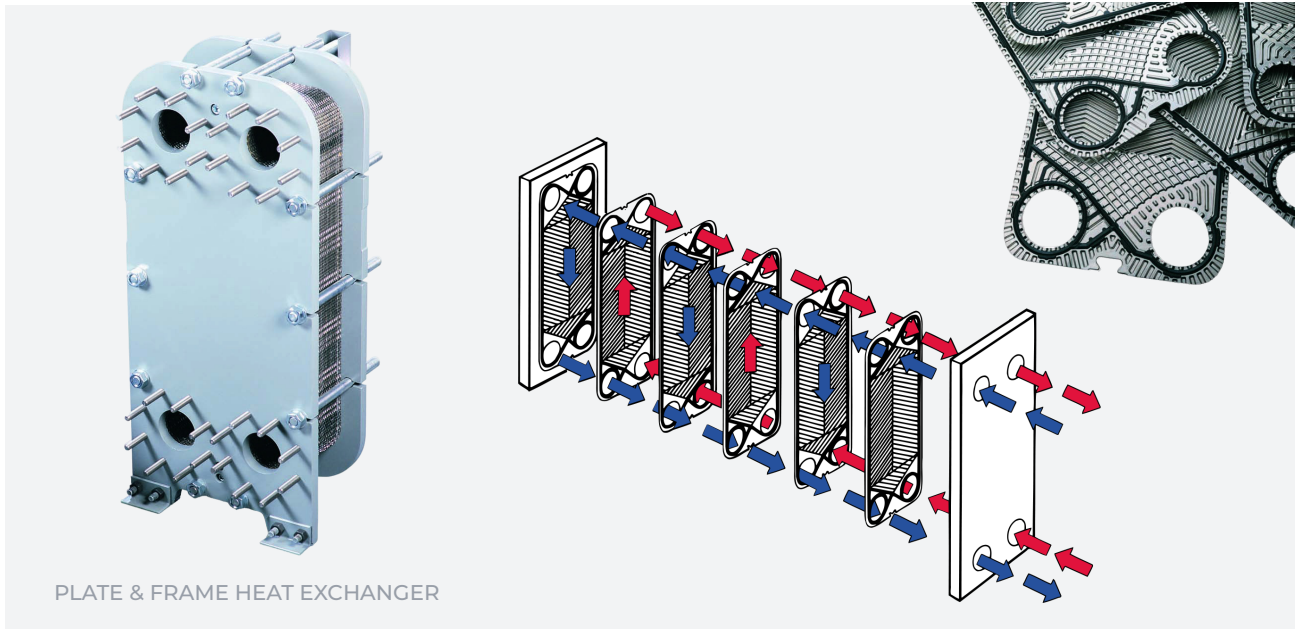


PLATE & FRAME HEAT EXCHANGER

## **Xylem Heat Exchangers — compact, high-performance thermal transfer engineered for the toughest industrial, commercial, and HVAC demands.**

Where space is limited and thermal performance cannot be compromised, the Xylem GPX Gasketed Plate and Frame Heat Exchangers rise to the challenge. Chevron-style plates drive superior heat transfer coefficients, and true countercurrent flow squeezes the maximum temperature differential from every fluid pass. Choose from 304SS, 316SS, titanium, Hastelloy, or Incoloy construction, across gasketed, semi-welded, double-wall, and free-flow plate variants — each configuration built to ASME Section VIII standards.

## **U-TUBE HEAT EXCHANGERS**

Built to perform where heat and pressure push systems to their limits, the U-Tube Tank Heaters, Double-Wall Heat Exchangers, and High Temperature Heat Exchangers bring reliable, efficient thermal transfer to the widest range of industrial and process applications. Each unit is purpose-engineered to withstand demanding high-pressure, high-temperature conditions — making them a trusted choice for HVAC, plumbing, and fluid processing systems that simply cannot afford to fail.



U-TUBE TANK HEATERS



DOUBLE-WALL HEAT EXCHANGERS



HIGH TEMP. HEAT EXCHANGERS

# EXPANSION JOINTS



Metraflex Piping Specialty Products, with over six decades of manufacturing expertise since 1958, provides metal and rubber expansion joints, flexible pump connectors, seismic couplings, and Metraloop solutions — precision-engineered to manage vibration isolation, thermal movement, and pipe alignment across commercial HVAC, fire protection, and industrial piping applications.

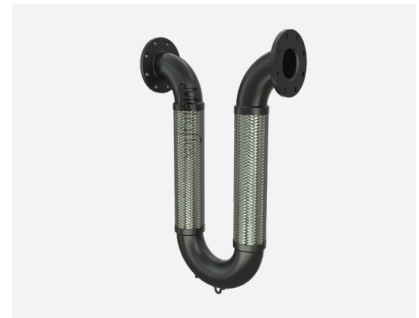
## EXPANSION JOINTS



METAL EXPANSION JOINTS



RUBBER EXPANSION JOINTS



U-LOOP EXPANSION JOINT

## FLEXIBLE CONNECTORS & HOSE



VRF EXPANSION JOINTS

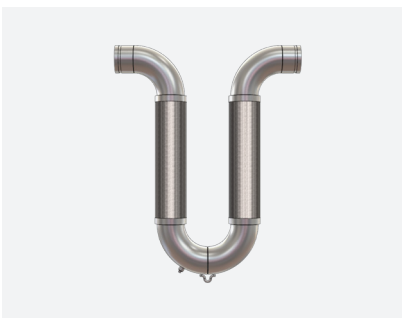


FLEXIBLE METAL HOSE

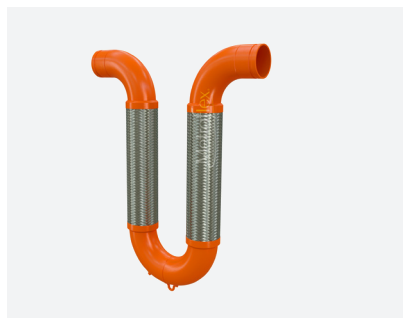


FLEXIBLE COUPLINGS

## SYSTEM SUPPORT & FIRE PROTECTION JOINTS



SS SEISMIC U-LOOP STYLE EXPANSION JOINT



SEISMIC U-LOOP STYLE EXPANSION JOINT

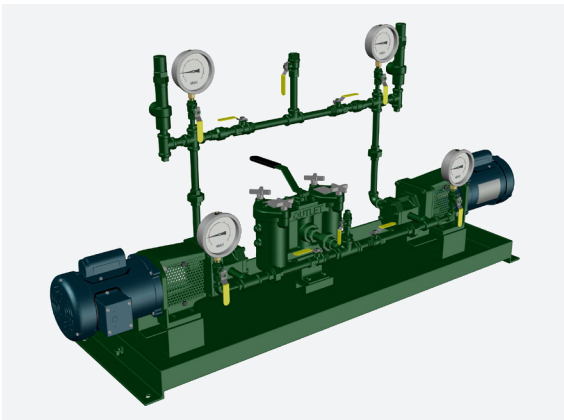


SEISMIC BREAKAWAY HANGER

# FUEL SYSTEMS

Albany FO Series Fuel Oil Transfer Systems deliver fully configured Simplex, Duplex, and Triplex pump and controller sets, specifically designed for emergency diesel generators, dual-fuel boilers, and mission-critical facilities such as data centres and hospitals — offering 1 to 150 GPM capacity within compact, leak-monitored containment enclosures.

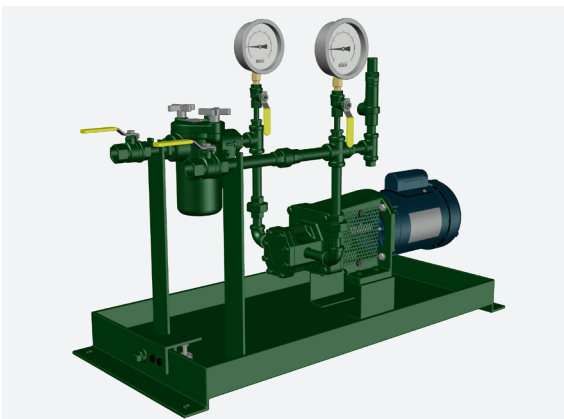
## DUPLEX FUEL SYSTEMS



Albany FO Series Duplex Fuel Oil System is a compact, factory-assembled transfer unit engineered for emergency diesel generator sets and dual fuel-fired boiler installations. Its space-efficient configuration integrates Albany ,G' and ,H' Series helical gear pumps for dependable, uninterrupted fuel delivery.

- **Capacity:** 0–35 GPM at 0–250 PSI
- **Fluid:** Fuel oil
- **Complete assembly** with valves, pressure/vacuum gauges, and schedule 80 piping
- **Integral containment base** with built-in leak detection monitoring

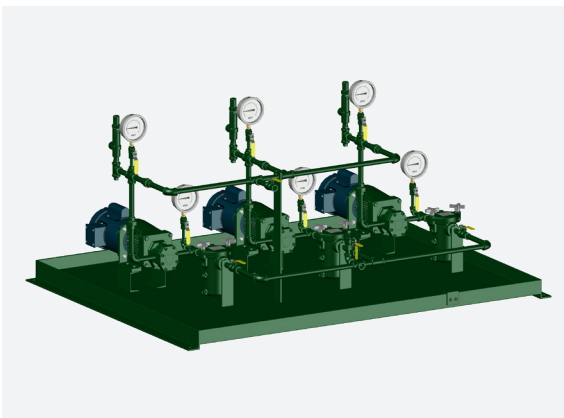
## SIMPLEX FUEL SYSTEMS



Albany FO Series Simplex Fuel Oil System is a factory-assembled, space-conscious transfer unit engineered specifically for emergency diesel generator sets and dual fuel-fired boiler applications.

- **Capacity:** 0–35 GPM at 0–250 PSI
- **Fluid:** Fuel oil
- **Integral containment base** with leak detection monitoring for added safety
- **Fully equipped** with check valves, ball valves, pressure/vacuum gauges, and relief valves

## TRIPLEX FUEL SYSTEMS



Albany FO Series Triplex Fuel Oil System is a compact, factory-assembled transfer unit purpose-built for emergency diesel generator sets and dual fuel-fired boiler installations.

- **Capacity:** 0–35 GPM at 0–250 PSI
- **Fluid:** Fuel oil
- **Complete assembly** with check valves, ball valves, pressure/vacuum gauges, and relief valves
- **Integral containment base** with leak detection monitoring for safe, compliant operation

# CHEMICAL FEED UNIT

**HELWIG PUMPS**  
A&F Machine Products Co.



## A&F Machine Products Co. — every chemical feed system engineered from the ground up to match exactly what your application demands.

A&F Machine Products Co. designs with that reality in mind. Whether working from detailed client specifications or developing a solution based solely on application parameters, their fabrication expertise ensures every system delivers accurate, dependable chemical dosing across industrial and water treatment operations.

The product range covers everything from compact single-pump units to multi-pump skid arrangements with fully integrated control panels. A standard 50-gallon mixer unit or a large-scale custom configuration A&F builds each system with the precision and flexibility your process requires.

## V-10 SIMPLEX, DUPLEX PISTON PUMPS



The V-10 is a heavy-duty piston metering pump designed for minimal maintenance demand across chemical feed, boiler systems, wastewater treatment, biocide injection, and pulp & paper operations. Precision-machined components, a ground stainless steel piston, and double ball check valves deliver consistent, accurate fluid metering.

- Drive: Oil-filled speed reducer available in multiple gear ratios; compatible with any 56C frame motor
- Output control: Manual stroke adjustment or optional variable speed motor and controller
- Configurations: implex or duplex; field-convertible with interchangeable mixed or identical piston heads



## Price Critical Environments — precision-engineered air distribution and infection control built specifically for operating rooms, hospitals, and clinical spaces.

Healthcare environments demand more from HVAC than any other setting, and Price Critical Environments answers that challenge with solutions engineered around patient safety and regulatory compliance. The Ultrasuite® replaces the conventional light ring entirely, uniting precision laminar airflow with high-output LED lighting in a single operating room system. Patient isolation rooms switch to negative pressure compliance instantly. Dental operatory solutions round out the range, pairing HEPA filtration with high-volume extraction for consistently superior indoor air quality.

### ULTRASUITE®

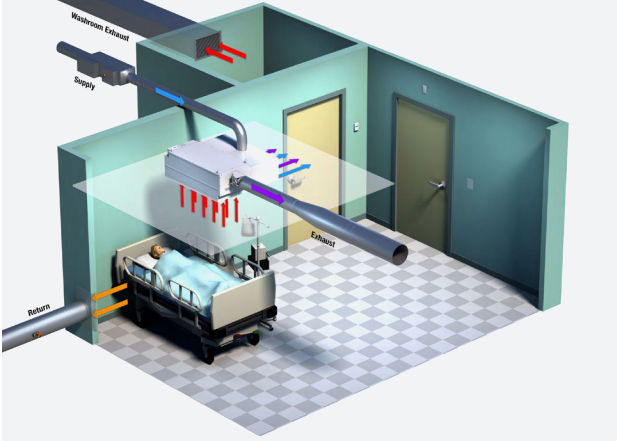
#### OPERATING ROOM DIFFUSER SYSTEM WITH LED LIGHTING



Price Industries' Ultrasuite® is a fully integrated air distribution and LED lighting system purpose-engineered for hospital operating rooms. By combining precision laminar airflow with high-output lighting, it eliminates the traditional light ring — freeing ceiling space for surgical equipment while meeting all ASHRAE 170 requirements.

- **Lighting:** 100+ lm/W, 95+ CRI, dimmable, IP67 sealed LEDs with L80 lifespan exceeding 60,000 hours
- **Airflow:** Equalized laminar distribution for optimal particulate removal from the surgical zone
- **Design:** Customizable, aesthetically clean ceiling integration

# CRITICAL ENVIRONMENTS



## PATIENT ISOLATION ROOM

Price Critical Environments empowers hospitals to transform standard patient rooms into fully compliant negative pressure isolation spaces at the touch of a button eliminating the need for costly field modifications or dedicated infrastructure.



## DENTAL OPERATORIES

Price's dental operatory solutions leverage high-volume extraction, HEPA filtration, and recirculated airflow to effectively reduce airborne particulate concentration and maintain superior indoor air quality.

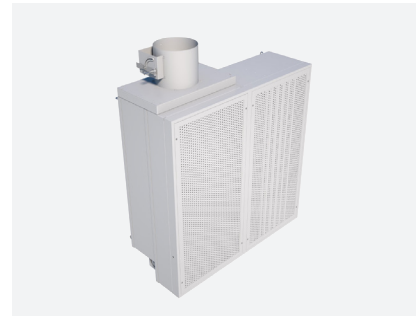
## CRITICAL ENVIRONMENT EQUIPMENT



DUAL-OUTLET EXHAUST & RECIRCULATING FAN FILTER UNIT (PURAFO)



SINGLE DUCT TERMINAL UNIT



CRITICAL AREA RECIRCULATION/EXHAUST SYSTEM (CARES)



SUPPLY DIFFUSER (SMD)



EXHAUST GRILLE



EXHAUST/RETURN DAMPER ACTUATOR

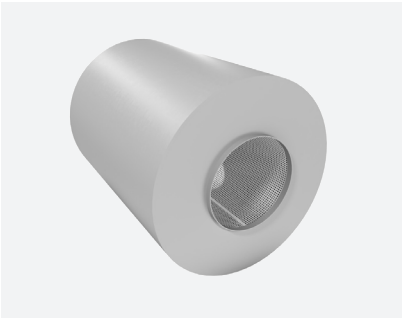
# NOISE CONTROL PRODUCTS



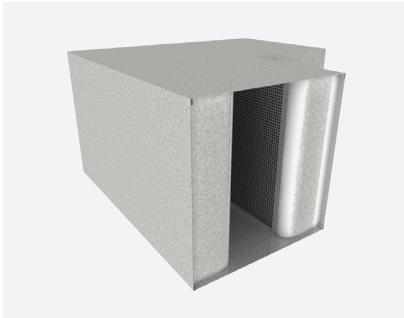
Price Noise Control Solutions offer precision-engineered products — including silencers, acoustic panels, and louvers — designed to attenuate HVAC-generated noise and elevate indoor acoustic comfort across commercial, educational, and industrial facilities.



RL/RM/RH - RECTANGULAR SILENCERS



CS - ABSORPTIVE CIRCULAR SILENCERS



ERM - RECTANGULAR ELBOW SILENCER



RSP - RECTANGULAR SILENCER PACKLESS



RAS - RETURN AIR SILENCER



QA/QAF - ACOUSTIC LOUVERS

# ELECTRIC DUCT HEATERS



Tutco E-Series Electric Duct Heaters — spanning Flip-Able, Round, and VAV configurations — provide UL/ ETL-certified, installation-flexible heating solutions purpose-engineered for commercial and industrial HVAC, heat pump, and variable air volume applications across an extensive kW and voltage range.

## E-SERIES FLIP-ABLE DUCT HEATERS



TUTCO E-Series Flip-Able Duct Heater is purpose-built for quick, adaptable installation in any mounting orientation — up, down, left, or right — with no field modifications required. Its symmetrical construction removes the risk of installation error, making it well-suited for HVAC retrofit projects and OEM system integration.

- **Certifications:** UL listed and ETL certified to UL 1996 safety standards
- **Performance:** High-efficiency elements for superior heat transfer and reduced energy consumption
- **Applications:** Zone heating, VAV systems, rooftop AHUs, and industrial process heating

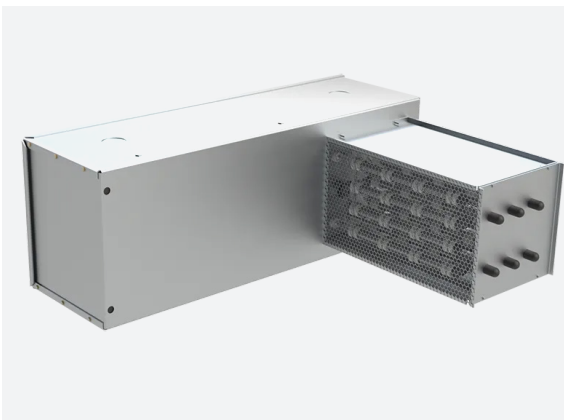
## E-SERIES ROUND DUCT HEATERS



TUTCO E-Series Round Duct Heater (EPH) delivers the broadest kW range available in its class, specifically designed for heat pumps, air conditioning units, and forced-air HVAC applications. Factory pre-wired with integrated control boxes, it accommodates single- and three-phase power up to 480V across 6", 8", 10", and 12" diameter options.

- **Certifications:** UL listed & ETL certified
- **Design:** Zero-clearance approved, bidirectional airflow, single-point power connection
- **Applications:** Primary, secondary, auxiliary, space, and recirculating air heating

## E-SERIES VAV FLIP-ABLE DUCT HEATERS



TUTCO E-Series VAV Flip-Able Duct Heater (EVH) is an electric heater engineered specifically for variable air volume single-duct HVAC systems. Its orientation-neutral construction eliminates left/right-hand ordering complexity, enabling a single unit to install in four mounting positions complete with a repositionable radiant safety diffuser screen.

- **Certifications:** UL, cETLus, and cULus listed for use within 20" of VAV valve
- **Applications:** Multi-zone, VAV, primary, auxiliary, and recirculating air heating



## Elsteam — engineering smarter humidification for the industries where humidity control is critical, not optional.

The Zephyr EHKT immersed electrode humidifier is built around one principle: deliver exactly the humidity needed, nothing more. A washable boiler rated for 20,000 hours of continuous operation works alongside an intelligent steam-output algorithm that actively reduces water waste. Low-transmittance distributors cut heat loss at the source, and an automated cleaning cycle keeps the unit running with minimal intervention — making it equally at home in hospitals, data centres, museums, and clean rooms.

## HUMIDIFICATION SOLUTIONS

Elsteam's full portfolio addresses every scale of humidity challenge. Compact ultrasonic units handle low-capacity spaces with quiet efficiency, immersed electrode systems integrate directly into air handling units, and high-pressure configurations take on large-scale industrial demands — each one engineered to hold accurate, stable humidity wherever it is needed.



COMPACT, LOW CAPACITY  
ULTRASONIC HUMIDIFIER



IMMERSED ELECTRODE  
HUMIDIFIERS (AHU)



HIGH PRESSURE  
HUMIDIFIERS

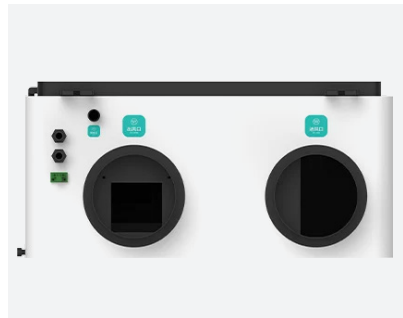
# DEHUMIDIFIERS



Yake Climate Dehumidifiers span a versatile product lineup — encompassing Industrial, Commercial, and Household Ceiling units, Desiccant Rotor, and Energy Storage Dehumidifiers — purpose-built to deliver accurate humidity management across a wide range of residential, commercial, and industrial environments.



INDUSTRIAL DEHUMIDIFIER



COMMERCIAL CEILING DEHUMIDIFIER



INDUSTRIAL CEILING DEHUMIDIFIER



HOUSEHOLD CEILING DEHUMIDIFIER



DESICCANT ROTOR DEHUMIDIFIER



ENERGY STORAGE DEHUMIDIFIER

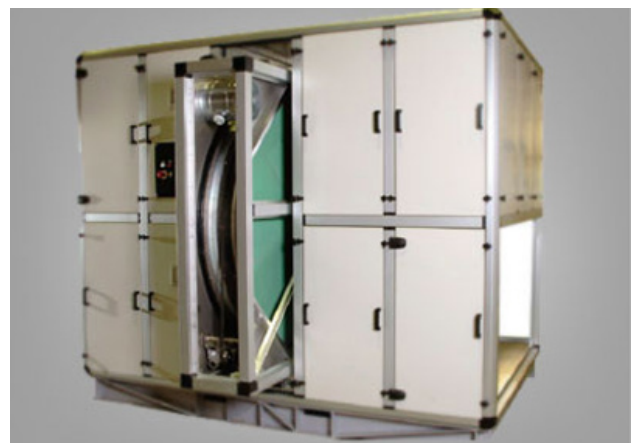
# DEHUMIDIFIERS



## Casilica Dehumidifiers offers four decades of desiccant expertise protecting product integrity in food, pharmaceutical, and industrial environments.

Moisture is one of the most damaging and least visible threats in food processing, storage, and pharmaceutical manufacturing. Unchecked humidity accelerates bacterial growth, breaks down packaging, and compromises the stability of medicines. Casilica's CRD series Desiccant Dehumidifiers tackle this directly, maintaining humidity consistently below 25% RH to preserve product quality, extend shelf life, and keep facilities fully compliant.

Backed by more than forty years of proven field experience, Casilica's technology is trusted by food and pharma operations worldwide — and for good reason. Their advanced desiccant systems reach very low humidity levels while consuming up to 40% less energy than conventional alternatives, giving facilities the performance they need without the operational cost they don't.



# ODOR CONTROL SOLUTION



## PureAir Filtration — custom-engineered odor control that shields workers, surrounding communities, and environments from harmful airborne gases.

Twenty years of hands-on expertise means PureAir never reaches for a standard solution when the problem is anything but standard. Every system is purpose-engineered around the specific challenge, using proprietary chemisorbant media to neutralize key pollutants including Hydrogen Sulfide, Ammonia, Formaldehyde, and Chlorine. Air preconditioning and continuous media monitoring through the patented LIFEGARD™ system keep performance optimized through every operating condition.

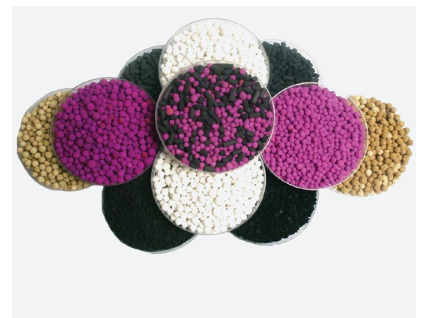
- Radial Flow: Round tank with minimal footprint
- V-Bank Transition System: High-volume industrial solution up to 84,100 CMH
- BEAST™ Bioscrubber: Biological H<sub>2</sub>S removal, handles over 300 ppm
- Drum Scrubber: Compact, self-contained vent control for small, budget-conscious applications
- Packed Bed System: Low-profile horizontal airflow handling up to 9,500 CMH



LIFEGARD™ SMART MEDIA MONITORING



VERTICAL BED SCRUBBER



CHEMISORBANT MEDIA

# INERTIA FILTERS



## **Filtrotecnica Italiana Inertial Filters - maintenance-free, high-efficiency air filtration with zero moving parts and no consumable elements to replace.**

By forcing incoming air through an abrupt directional shift, these filters exploit the natural inertia of dust and airborne particles — they cannot follow the air's new path and instead collect in a dedicated extraction duct. The outcome is stable, high-efficiency filtration with consistently low pressure drops, performing reliably even in the harshest desert or marine conditions.

The modular inertial cell design allows for compact installation and straightforward setup, while a secondary fan continuously ejects separated dust without interrupting airflow. Fully cleanable and recyclable filter elements mean long service life and minimal waste — making this an intelligent, environmentally responsible choice for large-volume air treatment applications.

## **CUSTOM INERTIAL SEPERATORS**



CONDENSING BOILER



HOT WATER BOILER



SUPER HEATED WATER BOILER

# FIRE PROTECTION VALVES



Duyar Fire Protection Valves deliver precision-engineered flow control and pressure regulation solutions designed for fire suppression applications. Covering UL/FM-certified gate valves and pressure reducing valves to flow meters and fire hose connections, every component is built to uphold system integrity, satisfy safety requirements, and perform with unwavering reliability when it matters most.

## PRESSURE RELIEF VALVE



Duyar Pressure Relief Valve safeguards piping systems and connected equipment by swiftly venting excess pressure to atmosphere before system damage can occur. Its relief pilot control mechanism reacts immediately to flow rate fluctuations, sustaining stable system pressure throughout — then closes gradually once pressure normalizes to the preset value, preventing water hammer or pressure transients.

- **Applications:** Overpressure protection on mains supply lines, safeguarding piping systems and downstream armatures from pressure surges
- **Nominal diameter:** DN50/65/80/100/150/200
- **Pressure rating:** PN16

## OS&Y GATE VALVE

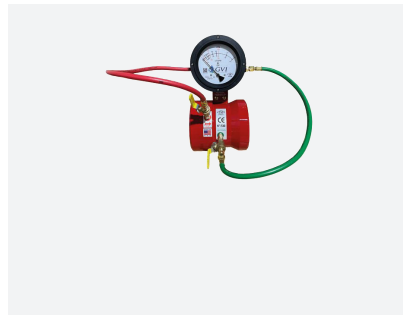


OS&Y Gate Valves function as zone control isolation valves on water supply lines, segregating and regulating individual zones within fire protection systems. The rising stem configuration delivers fully unobstructed flow in the open position, enables clear visual verification of valve status, and accommodates electrical monitoring through an optional supervisory switch — all while maintaining lower hydraulic resistance compared to butterfly valves.

- **Nominal diameter:** DN65/80/100/125/150/200
- **Applications:** Zone control and shut-off on water supply lines in fire protection systems
- **Certifications:** UL listed and ETL certified, GOST



PRESSURE REDUCER VALVE



FLOW METER GVI



TWO WAY INLET



## UL/FM CHECK VALVE

Mueller UL/FM Swing Check Valve provide consistent unidirectional flow management for demanding fire protection and industrial high-pressure environments. Offered in 2"–16" sizes across two distinct model configurations, they incorporate rubber disc facing, bronze seat rings, and carry dual UL/FM certification for verified performance assurance.

- Size: 2"–16" across two model configurations
- Working pressure: 250 psi for 14" & 16"; 350 psi for 2"–12"
- Test pressure: 500 psi for 14" & 16"; 700 psi for 2"–12"
- Features: ANSI B16.1 CL125 flanged ends, UL Listed, FM Approved



## UL/FM GATE VALVE

Mueller UL/FM Gate Valves are resilient wedge gate valves purpose-built for dependable, long-service performance in fire protection applications. Designed to satisfy rigorous UL/FM standards with rated working pressures to 350 psi, they support a broad range of end connection configurations for straightforward, efficient field installation.

- Features: UL Listed, FM Approved, resilient wedge seating, optional AquaGrip® O-ring sealed compression connection
- Configurations: OS&Y and Post Indicator Valve (PIV) designs available in size ranges of 2"–3", 3"–12", and 14"–24"
- End Connections: Flanged, Mechanical Joint, and Flange x Mechanical Joint combinations



# INCINERATOR



1100LB/HR OIL FIELD INCINERATOR

## Penram — fully integrated incineration and air pollution control systems engineered to meet the world’s most demanding environmental standards.

Every Penram system is designed, fabricated, shop-tested, and ocean-packaged entirely in-house, serving industrial, medical, and municipal applications to U.S. EPA, EU, and World Bank emission standards. Incinerators and air pollution control systems are engineered as a matched pair — an integrated approach that ensures even the most stringent regulatory thresholds are not just met, but consistently exceeded.

- Autoclaves & E-Line Models: Specialized solutions
- Industrial Incinerators: Heavy-duty applications
- Wet Scrubbers & APC Equipment
- Medical Incinerators: Compliant waste disposal
- Municipal & Animal Crematory: Versatile capacity
- Waste to Energy Systems



125 GAL/HR LIQUID WASTE THERMAL PLANT



MODEL E-100 INCINERATOR



MODEL E-180 INDUSTRIAL WASTE



**Expert Power Building Materials Trading LLC**, UAE is a leading provider of innovative thermal and mechanical solutions across the region. We offer a comprehensive portfolio of products including boilers, chillers, heat exchangers, expansion joints, fuel pumps, duct heaters, and energy storage systems.

We also supply humidifiers, dehumidifiers, fire protection valves, odor control units, incinerators, calorifiers, inertial filters, and critical environment systems.

With trusted brands such as Ferroli, Hurst, Hi-Ref, Wessels, Xylem, Metraflex, Price, Tutco, CALMAC, and more, our products consistently deliver durability and performance in the most demanding applications.

## GET IN TOUCH

**Mohammad Ashraf**  
General Manager  
+971-52558-0577  
mashraf@expertpower.ae

**Shraddha P.**  
Business Development Manager  
+971-52320-2961  
shraddha@expertpower.ae

**Asharaf C.**  
Sales Engineer  
+971-58663-3525  
asharaf@expertpower.ae

**Muhammed Mashood**  
Sales Engineer  
+971-58671-2586  
mashood@expertpower.ae

### **Expert Power Building Materials Trading LLC**

M02, Al Mazoon Building, Damascus Street, Al Qusais - 2, Dubai, UAE

Phone: +971 52558-0577 Email: mashraf@expertpower.ae Website: www.expertpower.ae